



The role of base station communication equipment





Overview

A base station connects your phone to the network. They provide the coverage you need for calls and data. The present-day tele-space is incomplete without the base stations as these constitute an important part of the modern-day scheme of wireless communications. It enables seamless communication by linking various wireless devices to broader networks, ensuring that data flows efficiently from one point to another.



The role of base station communication equipment



What Is A Base Station?

A base station is a piece of equipment that facilitates wireless communication between devices and a network. It contains the necessary hardware and software to transmit and receive ...

What is a Base Station? -- From Communication Core to Thermal ...

Simply put, a base station (BS) is a wireless transceiver device in a mobile communication network that provides wireless coverage and communicates with mobile terminals ...



[Understanding Base Stations: The Backbone of Wireless ...](#)

A base station is a fixed communication infrastructure that connects mobile devices (such as smartphones, tablets, or IoT devices) to a network, enabling wireless communication.

[What Is a Base Station? Definition and How It Works](#)

Its function is to transmit and receive radio signals to and from wireless client devices. The base station acts as a converter, taking radio waves from a mobile phone and transforming them ...

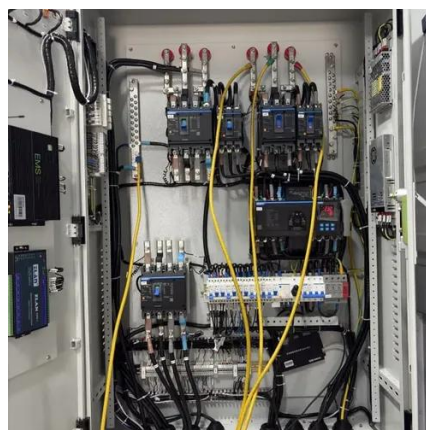


The Role And Importance Of Radio Base Stations In Modern ...

In conclusion, radio base stations are an essential component of modern communication systems, enabling the transmission, reception, and management of radio signals between mobile ...

What Is the Role of a Base Station in Wireless Communication?

Base stations are critical components in wireless communication networks, serving as the intermediary between mobile devices and the core network. They play a vital role in ensuring ...



What are Base Station in Telecommunications?

The Backbone of Wireless Networks A base station connects your phone to the network. It acts as a hub between mobile devices and the core system. Base stations form the backbone of ...

What is a Base Station in



Telecommunications?

Base stations are the backbone of modern telecommunications networks, providing the essential infrastructure for wireless communication. They enable mobile devices to connect to the network, ...



51.2V 300AH

Base Stations and Cell Towers: The Pillars of Mobile Connectivity

Base stations use antennas mounted on cell towers to send and receive radio signals to and from mobile devices within their coverage area. This communication enables users to make ...



Base Stations

Base stations form a key part of modern wireless communication networks because they offer some crucial advantages, such as wide coverage, continuous communications and an array of ...



Contact Us

For catalog requests, pricing, or partnerships, please visit:

<https://www.id2market.eu>

Phone: +34 910 56 87 45

Email: info@id2market.eu

Scan the QR code to access our WhatsApp.

