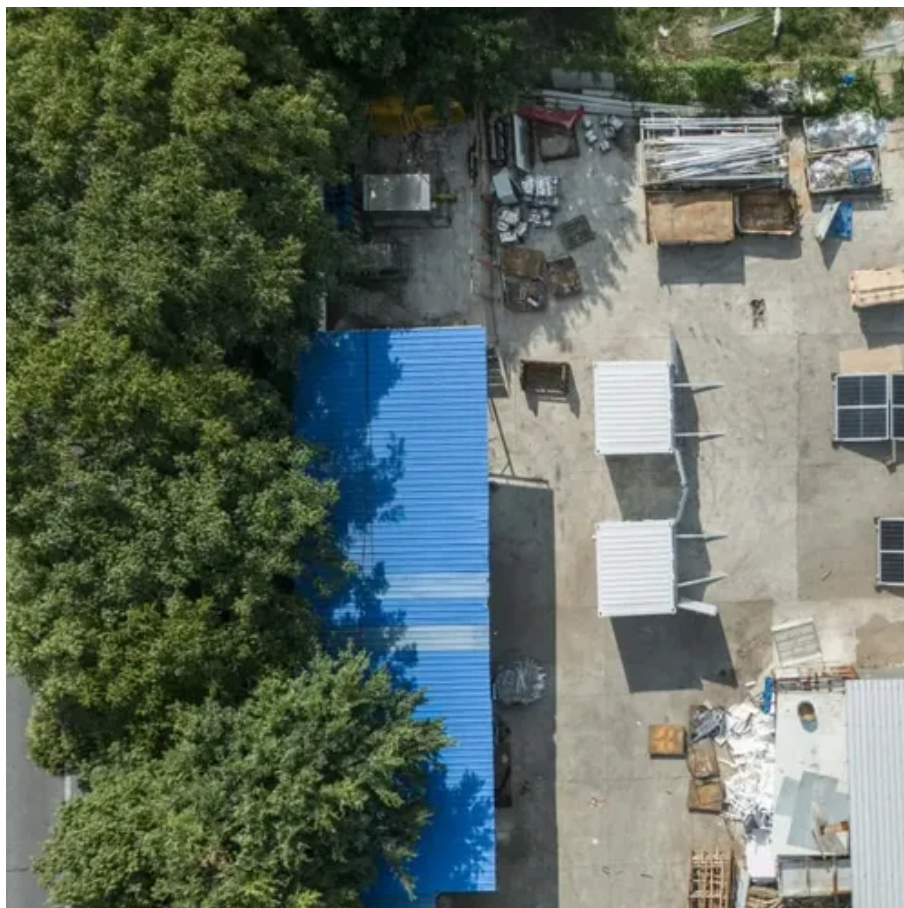




The wind turbine tower is really tall





Overview

The average height for the tower of a wind turbine is between 60 and 120 meters. Why Build Taller Turbines?

Taller wind. Modern wind turbines stand as tall as some of the world's most iconic buildings, and they've grown by a lot over the decades. That's taller than the Statue of Liberty! The average hub height for offshore wind turbines in the United States is projected to grow even taller—from 100 meters. The average height of a wind turbine is approximately 90 meters, with modern turbines standing impressively tall at 103.4 meters (339 feet) as of 2023. These towering structures maximize energy production by capturing stronger winds higher off the ground.



The wind turbine tower is really tall



[World's Largest Wind Turbine Would Be Taller Than ...](#)

Turbines are already noticeably larger than they were 15 or 20 ...

World's Largest Wind Turbine Would Be Taller Than the Empire State

Turbines are already noticeably larger than they were 15 or 20 years ago. Size varies, but today's typical wind farm towers stand around 70 meters tall, with blades about 50 meters long.



How High Are Wind Turbines?

This article will delve into the factors influencing turbine height, exploring the benefits of taller turbines, and addressing common questions about these modern marvels of engineering.

[How Tall Are Wind Turbines? Manufacturing, Facts & FAQ](#)

Even though wind turbines stand tall as they are, they are still too close to the surface. To reach an altitude that is undisturbed, they would need to stand at least 656-984 feet in height.



[How Tall is the Tower of a Wind Turbine?](#)

In this article, we're going to break down how tall turbine towers can get, as well as the factors that dictate their size. The average height for the tower of a wind turbine is between 60 and ...

[Wind Turbines: the Bigger, the Better](#)

Turbine towers are becoming taller to capture more energy, since winds generally increase as altitudes increase. The change in wind speed with altitude is called wind shear.



[List of The 11 Tallest Wind Turbines in The World](#)

In engineering, bigger rotor blades should be installed on larger platforms to ensure stability. We are going to look at the tallest wind turbines in the world. 1. Vestas V236-15.0 MW - ...

[What Height Are Wind Turbines Around](#)



The World?

Currently, the tallest wind turbine globally has an overall height (including blade length) of 800 feet. The turbine was built by Max Bögl Wind AG and is located in Germany.



How Tall Are Wind Turbines? (2025 Guide)

Modern wind turbines stand as tall as some of the world's most iconic buildings, and they've grown by a lot over the decades. These massive structures typically reach between 60 and ...



Increasing Wind Turbine Tower Heights: Opportunities and ...

Between 140 and 160 m, median capacity factor gains are approximately 1 percentage point. Relatively larger gains occur east of the Rocky Mountains, with the greatest gains sprinkled throughout the ...



What Is The Height Of An Actual Wind Turbine?

The average height of a wind turbine is approximately 90 meters, with modern turbines standing impressively tall at 103.4 meters (339 feet) as of 2023. These towering structures maximize ...





Contact Us

For catalog requests, pricing, or partnerships, please visit:

<https://www.id2market.eu>

Phone: +34 910 56 87 45

Email: info@id2market.eu

Scan the QR code to access our WhatsApp.

