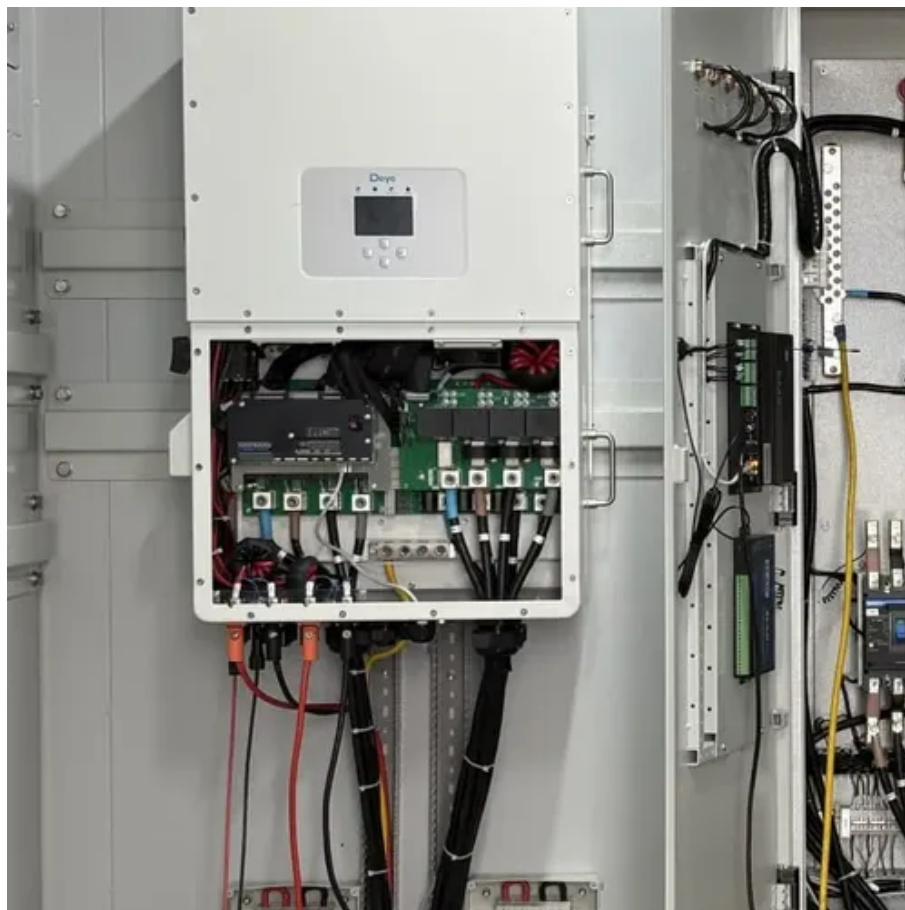




Types of Power Base Stations





Overview

Macro cell, Micro cell, Pico cell and Femto cell are 4 types of base stations in wireless communication networks. Macrocell antennas must be properly mounted on ground-based masts, rooftops or other existing structures and at heights for an unhindered, clear view of the surroundings. These are reliable but contribute significantly to greenhouse gas emissions. Nuclear Power Plants: Utilize uranium in a nuclear fission reaction to generate heat. A power station, also referred to as a power plant and sometimes generating station or generating plant, is an industrial facility for the generation of electric power. Electricity now powers everything from watches to automobiles.



Types of Power Base Stations



Power Base Station

The base station is the physical node that transmits and receives RF signals on one or more antenna connectors. Note that a base station is not the same thing as an eNodeB, which is the corresponding ...

[Generating electricity - WJEC Power stations](#)

Nuclear power stations and coal-fired power stations usually produce the minimum level of electricity required by the National Grid over a period of 24 hours. This is called base load



Types of Base Stations

In this article, we will discuss the different types of base stations with their advantages and applications in the real world. A base station is a component that provides functionality as a gateway ...

[Power Plant: What Are They? \(& the Types of Power Plants\)](#)

A SIMPLE explanation of Power Plants. Learn what a Power Plant is, the different types of Power Plants (also known as Power Generation station). We also discuss how power plants



[9 Different Types of Power Plants + PDF](#)

Different types of power plants are categorized depending on the type of fuel utilized. The most effective energy sources for bulk power generation include thermal, nuclear, hydropower, and ...

List of 12 Types of Power Plants

Learn what a power generating station is, how it works, and the main types--from fossil fuel and nuclear to hydro, wind, and solar. Explore core ...



Power station

The energy source harnessed to turn the generator varies widely. Most power stations in the world burn fossil fuels such as coal, oil, and natural gas to generate electricity. Low-carbon power sources ...



What Is a Power Generating Station?



Definition, Types, How It Works

Learn what a power generating station is, how it works, and the main types--from fossil fuel and nuclear to hydro, wind, and solar. Explore core components, efficiency, environmental ...



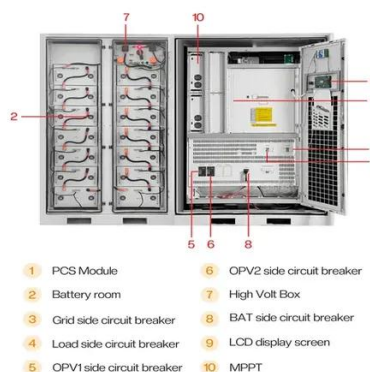
Power station

Overview History Thermal power stations Power from renewable energy Storage power stations Typical power output Operations See also

A power station, also referred to as a power plant and sometimes generating station or generating plant, is an industrial facility for the generation of electric power. Power stations are generally connected to an electrical grid. Many power stations contain one or more generators, rotating machines that convert mechanical power into three-phase electric power. The relative motion between a magnetic field

Types of Generating Stations: A Guide to Power Plant Sources

Discover how different types of generating stations contribute to base load and peak load power. Explore the environmental considerations for each type of power plant.



4 types of Base stations

Macro cell, Micro cell, Pico cell and Femto cell are 4 types of base stations in wireless communication networks. Macrocell antennas must be properly mounted on ground-based masts, ...



List of 12 Types of Power Plants

In this article, you'll learn about how a power plant works, different types of power plants, it's terminology, energy sources, factors and more.





Contact Us

For catalog requests, pricing, or partnerships, please visit:

<https://www.id2market.eu>

Phone: +34 910 56 87 45

Email: info@id2market.eu

Scan the QR code to access our WhatsApp.

