



What are the grid-connected inverters



UL1973 / UL9540A / FCC
UN38.3 / IEC62619 / CE
CEI 0-21 / VDE2510-50
UK
[VIEW MORE](#)





Overview

Grid-tie inverters convert DC electrical power into AC power suitable for injecting into the electric utility company grid. The grid tie inverter (GTI) must match the phase of the grid and maintain the output voltage slightly higher than the grid voltage at any instant. A high-quality modern grid-tie inverter has a fixed unity, which means its output voltage and current are perfectly lined up, and its phase angle is within 1° of the AC power grid. The inverter has an internal computer that senses the current.



What are the grid-connected inverters



Grid-tie inverter

Grid-tie inverters convert DC electrical power into AC power suitable for injecting into the electric utility company grid. The grid tie inverter (GTI) must match the phase of the grid and maintain the output ...

What is a Grid-Tied Inverter?

A specialized inverter receives power from your solar panels and converts the DC voltage they produce directly into grid-compatible AC power. The grid-tie inverter enables your home ...



What Is A Grid-Tied Inverter?

What Exactly Is a Grid-Tied Inverter? A grid-tied inverter, also known as a grid-connected or on-grid inverter, is the linchpin that connects your solar panels to the utility grid.

[Solar Integration: Inverters and Grid Services Basics](#)

As more solar systems are added to the grid, more inverters are being connected to the grid than ever before. Inverter-based generation can produce energy at any frequency and does not have the same ...



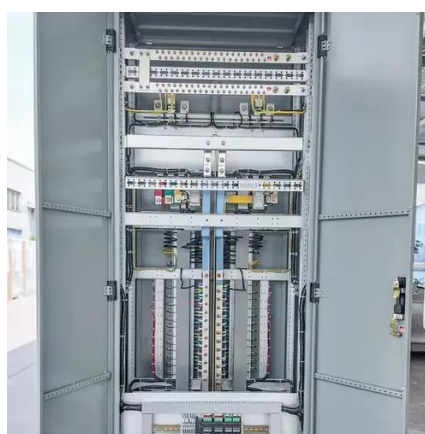
The Ultimate Guide to On-Grid Inverters: How They Work and Why

...

A On-Grid inverter, also known as a grid-interactive or grid-connected inverter, is a device that converts the direct current (DC) electricity generated by solar panels into alternating current (AC) electricity, ...

What Is The Difference Between Grid-Tied And Grid Interactive Inverters?

Grid-tied inverters are essential components of solar power systems that connect directly to the utility grid. Unlike off-grid inverters that rely on battery storage, grid-tied inverters facilitate the ...



A comprehensive review of grid-connected inverter topologies and

Grid-connected inverters are fundamental to the integration of renewable energy systems into the power grid. These inverters must ensure grid synchronization, efficient power conversion, ...



What Does A Grid Connected Inverter Do

Grid-connected inverters optimize the use of solar energy by ensuring that it's consumed when it's most abundant. For example, your solar system will power your home directly during the day when

...



48V 100Ah

Grid-tie inverter

Overview
Operation
Payment for injected power
Types
Datasheets
External links

Grid-tie inverters convert DC electrical power into AC power suitable for injecting into the electric utility company grid. The grid tie inverter (GTI) must match the phase of the grid and maintain the output voltage slightly higher than the grid voltage at any instant. A high-quality modern grid-tie inverter has a fixed unity power factor, which means its output voltage and current are perfectly lined up, and its phase angle is within 1° of the AC power grid. The inverter has an internal computer that senses the current ...

What is a solar grid-connected inverter? NenPower

A solar grid-connected inverter is a device that converts the direct current (DC) electricity generated by solar panels into alternating current (AC) electricity for use in a household or to be fed

...



Grid-Connected Inverters: The Ultimate Guide

Grid-connected inverters are power electronic devices that convert direct current (DC) power generated by renewable energy sources, such as



solar panels or wind turbines, into ...





Contact Us

For catalog requests, pricing, or partnerships, please visit:

<https://www.id2market.eu>

Phone: +34 910 56 87 45

Email: info@id2market.eu

Scan the QR code to access our WhatsApp.

