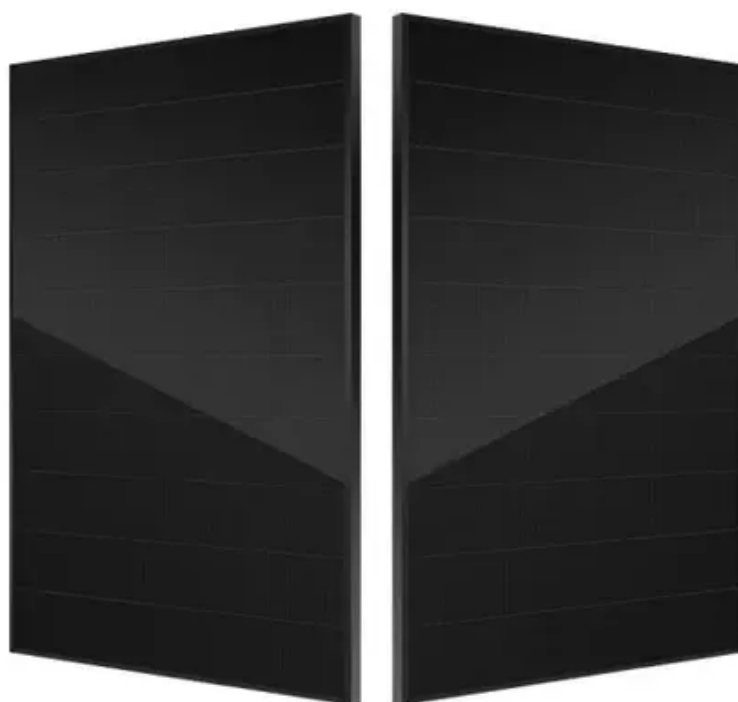




# What does the Helsinki communication base station inverter include





## Overview

---

Power conversion and adaptation: The inverter converts DC power (such as batteries or solar panels) into AC power to adapt to the power needs of various communication equipment. This is critical to ensure stable operation of base station equipment regardless of power source. Several energy storage technologies are currently utilized in communication base stations. Lithium-ion batteries are among the most common due to their high energy density and efficiency. [pdf] What does a 12V to 230V power inverter do?

A 12V to 230V power inverter converts 12V DC power to 230V AC. Huijue Group's energy storage solutions (30 kWh to 30 MWh) cover cost management, backup power, and microgrids. Home energy storage solutions now account for approximately 35% of all new. Source: CSIS via WSJ North Korea has built a secret military base near the Chinese border to store intercontinental ballistic missiles (ICBMs) capable of striking the U.



## What does the Helsinki communication base station inverter include



### Helsinki communication base station energy storage battery ...

Communication base station energy storage lithium battery refers to a type of rechargeable lithium-ion battery that is specifically designed for use in communication base stations.

### [Communication Base Station Inverter Deployment Plan](#)

This paper develops a method to consider the multi-objective cooperative optimization operation of 5G communication base stations and Active Distribution Network (ADN) and constructs a description ...



### [Functions of the communication base station inverter](#)

Power conversion and adaptation: The inverter converts DC power (such as batteries or solar panels) into AC power to adapt to the power needs of various communication equipment. This is critical to ...

### Helsinki Communication Base Station Industrial and Commercial ...

Technological advancements are dramatically improving home solar storage and inverter performance while reducing costs. Next-generation battery management systems maintain optimal performance ...



### [Energy storage for communication base stations in Helsinki](#)

The Energy storage system of communication base station is a comprehensive solution designed for various critical infrastructure scenarios, including communication base stations, smart



### **Energy Storage Equipment, Energy storage solutions, Lithium battery**

The solution adopts new energy (wind and diesel energy storage) technology to provide a reliable guarantee for the stable operation of communication base stations.



### [WHAT ARE THE INVERTERS WITH BUILT IN COMMUNICATION ...](#)

In areas where power outages are common, base stations may be equipped with backup power sources such as batteries or generators to maintain service during power failures.



### **COMMUNICATION BASE STATION**



This goes for a femtocell base station or 5G small cell backhaul, base transceiver station architecture, or a cellular base-station equipment. We recommend you use nylon material where it's offered.



### HOW ABOUT THE SOLAR ENERGY STORAGE INVERTER FOR ...

What does a 12V to 230V power inverter do? A 12V to 230V power inverter converts 12V DC power to 230V AC power. It is ideal for various users including caravaners, truck drivers, doctors, electricians, ...



## Contact Us

---

For catalog requests, pricing, or partnerships, please visit:

<https://www.id2market.eu>

Phone: +34 910 56 87 45

Email: [info@id2market.eu](mailto:info@id2market.eu)

Scan the QR code to access our WhatsApp.

