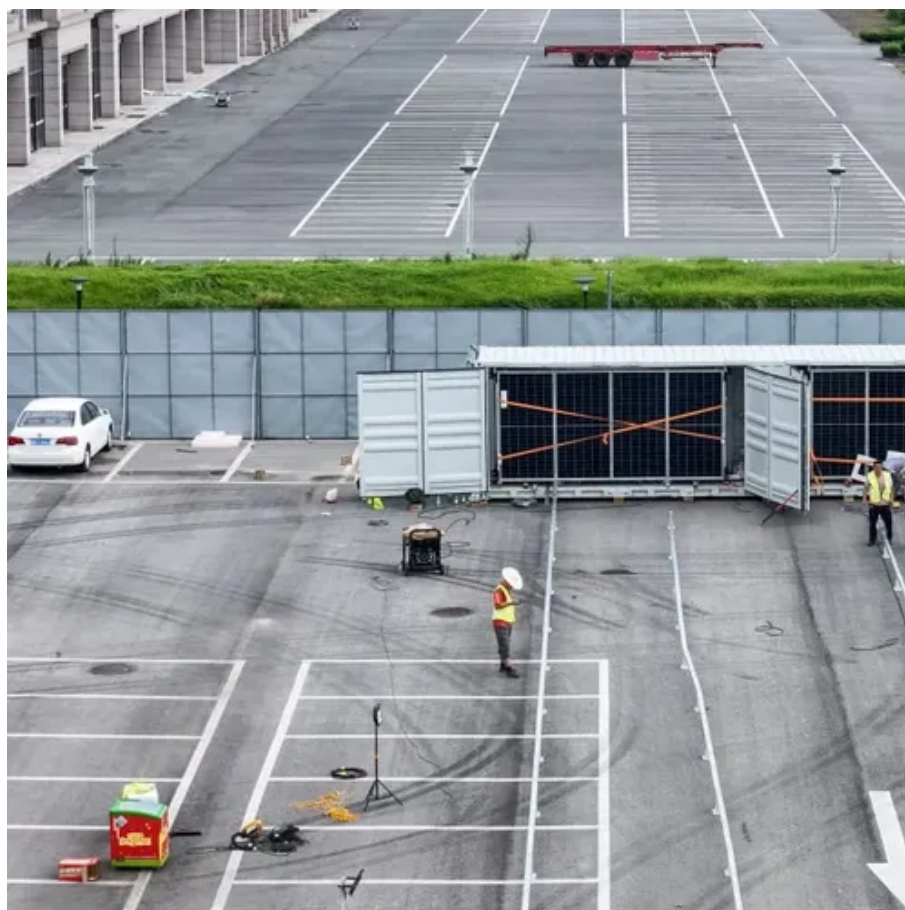




What is the best balanced voltage for lithium battery packs





Overview

When the battery voltage difference reaches more than 20mV, balancing is required, especially in the range of 20-50mV, the balancing effect is best. Cell balancing is the act of making sure all cells in a battery are at the same voltage.



What is the best balanced voltage for lithium battery packs



[Essential Guide to LiFePO4 Battery Balancing: Improve](#)

LiFePO4 battery balancing refers to the process of equalizing the voltage and charge across all cells in a battery pack. When we assemble multiple cells into a battery pack, ideally, each ...

[How To Balance A Lithium Batteries: Top and Bottom Balancing](#)

A balanced battery pack is critical to getting the most capacity out of your pack, read along to learn how to top and bottom balance a lithium battery pack.



A critical review of battery cell balancing techniques, optimal design

Considering the significant contribution of cell balancing in battery management system (BMS), this study provides a detailed overview of cell balancing methods and classification based on ...



[Battery Cell Balancing: What to Balance and How](#)

Typical by-pass currents range from a few milliamps to amperes. Difference of cell voltages is a most typical manifestation of unbalance, which is attempted to be corrected either instantaneously or ...



[Battery Balancing: Techniques, Benefits, and How It ...](#)

Learn how battery balancing improves performance, safety, and lifespan. Explore key techniques, benefits, and the science behind balancing battery cells effectively.

Techniques for Balancing Batteries- Improve Battery Life & Safety

Step 1: Fully charge each battery individually using a compatible lithium charger. This ensures that every battery starts from the same high-energy state. Step 2: Use a precise multimeter to measure the ...



[A complete analysis of lithium battery balancing technology](#)

When the battery voltage difference reaches more than 20mV, balancing is required, especially in the range of 20-50mV, the balancing effect is best. Correct use of balancing technology ...

How to Balance Your Lithium Battery



Pack During Installation

Balancing a lithium battery pack during installation is critical to ensure all cells have the same voltage, which prevents damage and optimizes battery life and performance.



[Cell Balancing: Key to Battery Performance , HiMAXBATT](#)

Cell balancing refers to the process of ensuring that all the cells within a battery pack charge and discharge at the same rate, maintaining uniform voltage levels across all cells.

[Battery Balancer Guide: Boost Battery Performance & Lifespan](#)

Battery balancers ensure stable voltage across all cells in a lithium battery pack, improving performance, lifespan, and safety. In applications from EVs and solar storage to industrial ...





Contact Us

For catalog requests, pricing, or partnerships, please visit:

<https://www.id2market.eu>

Phone: +34 910 56 87 45

Email: info@id2market.eu

Scan the QR code to access our WhatsApp.

