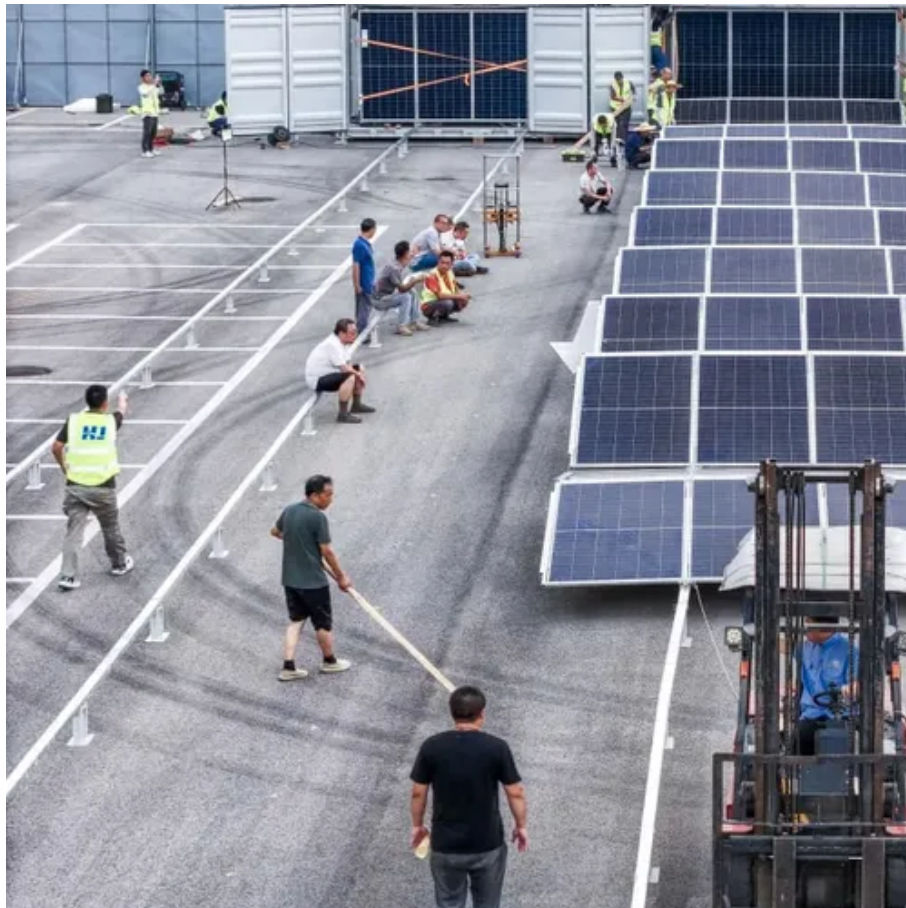




Which is the positive and negative pole of the photovoltaic panel





Overview

To identify a solar panel's polarity, check the MC4 connectors (male/female) or use a multimeter (DC voltage mode)—positive terminals show +V (e., +18V for a 20W panel), negative reads -V or zero. Wires are often red (positive) and black (negative), or. Identifying the positive and negative poles of solar panels is essential for proper installation and efficiency in harnessing solar energy. Understanding the Basics of Solar Panels, 2. Misidentifying these terminals can lead to faulty wiring, reduced energy output, or even damage to the equipment. Always verify before connecting.



Which is the positive and negative pole of the photovoltaic panel



How to test the positive and negative poles of photovoltaic panels

The article explains how to determine the positive and negative terminals of a solar panel, crucial for proper installation to avoid energy wastage. Methods include examining the diode and using a ...

How do you know if a solar panel is positive or negative

To identify a solar panel's polarity, check the MC4 connectors (male/female) or use a multimeter (DC voltage mode)--positive terminals show +V (e.g., +18V for a 20W panel), negative reads -V or zero.



How To Properly Determine The Negative And Positive Terminals Of ...

In order to determine the positive and negative of your solar panel is to examine the diode. You're going to need to open your junction box in order to find the diode located inside. If you ...

Solar Panel Positive and Negative (Diode + Voltmeter)

Even when inside a building, a simple voltage reading will reveal the polarity of a solar panel. Put the red positive meter lead on one side and the black negative lead on the other. This measures across the ...



Positive and negative polarity of solar photovoltaic panels

Key Takeaways. Some of the solar energy pros are: renewable energy, reduced electric bill, energy independence, increased home resale value, long term savings, low maintenance.

How to identify the positive and negative poles of solar panels

In a typical solar panel configuration, the positive terminal is usually marked with a red wire or a "+" symbol, while the negative terminal is denoted by a black wire or a "-" symbol.



Solar Panel Positive and Negative (Diode + Voltmeter)

Short on time? Here's The Article Summary
How to Determine The Positive and Negative Terminals of A Solar Panel
How to Check Solar Panel Polarity
How to Use Solar Panel Connectors and Cables
The Ultimate Solar + Storage Blueprint
The article explains how to determine the positive and negative terminals of a solar panel, crucial for proper installation to avoid energy wastage. Methods include examining the diode and using a voltmeter to measure voltage. It also discusses checking solar panel polarity and fixing reverse



polarity issues. Conn...See more on shopsolarkits
tongwei.cn

How do you know if a solar panel is positive or negative

To identify a solar panel's polarity, check the MC4 connectors (male/female) or use a multimeter (DC voltage mode)--positive terminals show +V (e.g., +18V for a 20W panel), negative reads ...

Identifying Positive and Negative Terminals on a Solar Panel

Polarity refers to the positive and negative terminals of the panel, and reversing them can lead to performance issues, equipment damage, or even safety hazards.



[How to identify positive and negative solar panel polarity](#)

The positive terminal connects to the diode's anode side (usually marked by a stripe or triangle symbol on the diode body), while negative links to the cathode.

How to distinguish positive and negative poles in photovoltaic panels

How to distinguish positive and negative poles in photovoltaic panels Know how to identify positive solar panel connectors with this step-by-step guide. From using markings and coloring to testing ...



How to read the positive and



negative poles of solar panels in English

Solar panels typically feature two terminals marked with symbols or connected to color-coded wires. The positive terminal is often designated with a '+' symbol and commonly features a red ...





Contact Us

For catalog requests, pricing, or partnerships, please visit:

<https://www.id2market.eu>

Phone: +34 910 56 87 45

Email: info@id2market.eu

Scan the QR code to access our WhatsApp.

