



Which side of the photovoltaic panel to use





Overview

In most cases, the best direction for solar panels is facing south 1. Arrays that are appropriately oriented can improve energy output by up to 30% or more 2. However, factors such as roof slope and proximity to the equator may have some homeowners considering other directions. East-West Orientations Offer Strategic Value: While producing 75-85% of south-facing output, east and west-facing panels can provide superior financial returns by aligning with time-of-use electricity rates and matching typical household consumption patterns. So. Whether to position panels in landscape or portrait orientation can significantly impact efficiency, installation feasibility, and overall energy yield.



Which side of the photovoltaic panel to use



[Optimal Orientation for Solar Panels: Landscape vs. Portrait](#)

Landscape orientation, where solar panels are installed with their long side parallel to the ground, is a common and preferred choice due to its easy installation and compatibility with various mounting ...

[Which Solar Panel Direction \(Orientation\) Is Best?](#)

Panel directions and the type of households they generally best suit are given below: North Orientation: Panels that face north produce the most electricity overall and can be the best ...



[Solar Panel Direction & Orientation: 2025 Complete Guide](#)

Optimizing your solar panel direction and orientation is one of the most impactful decisions you can make for your solar investment. The right positioning can increase your energy production ...

[Solar Panel Placement: Best Direction & Orientation Guide](#)

Discover the optimal solar panel direction, placement & orientation to maximize energy efficiency. Boost savings with expert tips for an ideal setup!



Best Direction for Solar Panels to Maximize Savings -- SolarReviews

In the United States, the best direction for solar panels to face is south as it exposes them to the most sun and allows them to produce the most electricity possible. Solar panels that face east or west will ...



Maximize Efficiency: Best Direction for Solar Panels , Sunrun

Learn the best direction for solar panels to optimize energy efficiency and savings. Find expert advice on positioning your panels for maximum performance.



[How to Find the Best Orientation and Angle of Solar Panels?](#)

In the Northern Hemisphere: Solar panels should preferably face the true south. In the Southern Hemisphere: Solar panels should preferably face the true north. The solar panel angle, also known ...

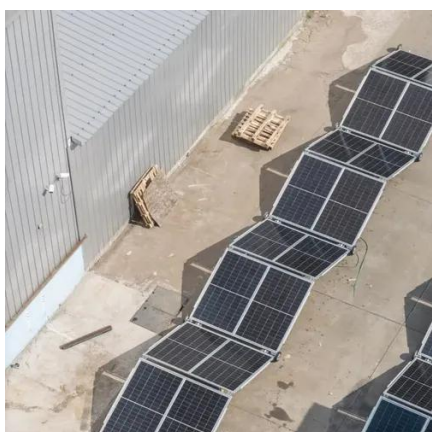


[What's the Best Direction for Solar](#)



[Panels? - Project Solar](#)

The best way to position solar panels depends on where you live. If you're in the Northern Hemisphere, it's best to face the panels southward. If you're in the Southern Hemisphere, facing them northward is ...



[Which Solar Panel Direction \(Orientation\) Is Best?](#)

This article explains roof orientation, pitch, shading, structural factors, and alternatives to help homeowners choose the optimal roof side for solar panels. Key factors include orientation, tilt, ...

[What Is the Best Direction for Solar Panels to Face?](#)

When positioning your solar panels on your roof, there are two main factors to take into account: To absorb the most possible sunlight, solar panels should be installed on south-facing roofs. ...



[Which Side of the Roof Should Solar Panels Be On](#)

This article explains roof orientation, pitch, shading, structural factors, and alternatives to help homeowners choose the optimal roof side for solar panels. Key factors include orientation, tilt, ...



Contact Us

For catalog requests, pricing, or partnerships, please visit:

<https://www.id2market.eu>

Phone: +34 910 56 87 45

Email: info@id2market.eu

Scan the QR code to access our WhatsApp.

