



# Which side of the solar panel should be used





## Which side of the solar panel should be used



### [Solar Panel Placement: Best Direction & Orientation Guide](#)

Discover the optimal solar panel direction, placement & orientation to maximize energy efficiency. Boost savings with expert tips for an ideal setup!

### [Solar Panel Direction & Orientation: 2025 Complete Guide](#)

Solar panels should face true south, not magnetic south. The difference between these directions, called magnetic declination, can vary by up to 30 degrees depending on your location.



### **Best Direction for Solar Panels to Maximize Savings -- SolarReviews**

In the United States, the best direction for solar panels to face is south as it exposes them to the most sun and allows them to produce the most electricity possible. Solar panels that face east or west will ...



### [What Direction Should Your Solar Panels Face? , Angi](#)

In the United States, your solar panels should face true south, but east- or west-facing panels are still a viable option. In the southern hemisphere, you'll want to face your panels true north. ...



## [Which Side Should Solar Panels Face for Optimal Energy?](#)

Learn which side solar panels should face for optimal energy production, debunk common myths, and explore key factors influencing orientation.

## [What direction should solar panels face?](#)

Determining the optimal direction for solar panel placement is crucial for maximizing energy production and ensuring the efficiency of your solar power system. The direction your solar ...



## [Which side of the solar photovoltaic panel faces up?](#)

Panels ought to be positioned facing true south in the Northern Hemisphere and true north in the Southern Hemisphere. This alignment ensures they receive the most direct sunlight ...

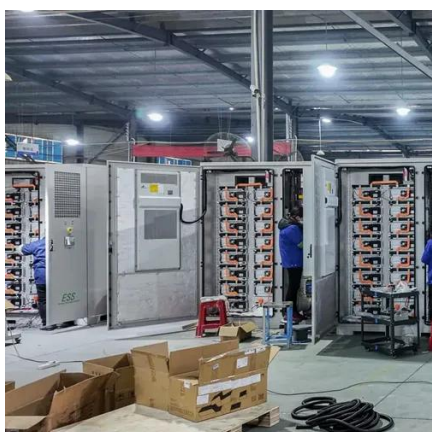


## [Best Direction for Solar Panels , Trinity](#)



## Solar

Find out which direction solar panels should face for maximum sunlight and energy savings. Learn how roof angle and orientation impact solar efficiency.



### What Direction Should Solar Panels Face? Understanding the Basics of

The optimal direction for solar panels to face is generally south in the Northern Hemisphere, as this orientation maximizes sunlight capture throughout the day, potentially increasing energy generation by up to 20%.

### Maximize Efficiency: Best Direction for Solar Panels , Sunrun

Solar panels are usually placed on your roof, preferably the side that gets the most direct sun. That's because even though panels will produce some energy whenever they face the sun, their ...





## Contact Us

---

For catalog requests, pricing, or partnerships, please visit:

<https://www.id2market.eu>

Phone: +34 910 56 87 45

Email: [info@id2market.eu](mailto:info@id2market.eu)

Scan the QR code to access our WhatsApp.

