



Why is the communication base station connected to three-phase electricity





Overview

For base stations, this journey culminates in three-phase AC power being connected to the system. Often referred to as the brain center, this includes: Baseband Unit (BBU): Handles baseband signal processing. Power Supply System This. There is a big difference between Single Phase and Three Phase supply systems where a three phase supply system has some advantages over a single phase supply system. Keep in mind that there are multiple applications of 6-phase, 12-phase etc. for rectifier circuits, VFD and other uses in power. A base station represents an access point for a wireless device to communicate within its coverage area. A generator just converts mechanical energy into electrical energy. Quickly and smoothly spread the signal to every corner, connecting your phone to the whole world.



Why is the communication base station connected to three-phase ele



[Single-Phase and Three-Phase System Explained](#)

Single Phase System
Three-Phase System
Voltage and Current Calculation in Wye-Connection Example
Voltage and Current Calculation in Delta Connection Example
Advantages of three-phase system include: 1. Compared to an equivalent single-phase system, the three-phase system transmits 73 percent more power but uses only 50 percent more wire. 2. The power delivered by a single-phase source is pulsating, whereas the power delivered by a three-phase system is relatively constant at all times. This means that
See more on [electricalacademia](#) [hoptele](#)

What is Telecommunication Base Station , China Hop

Generally speaking, a base station consists of three antennas, each transmitting signals in a 120 degree direction towards the surrounding ...

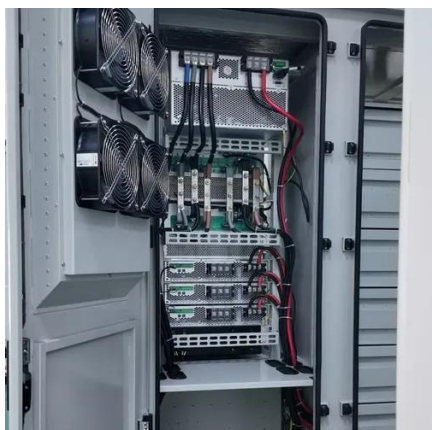
[Single-Phase and Three-Phase System Explained](#)

Compared to an equivalent single-phase system, the three-phase system transmits 73 percent more power but uses only 50 percent more wire. The power delivered by a single-phase source is ...



Base Stations

Backhaul Connection: The backhaul connection links the base station to the core network in the mobile communication system. It provides for the interchange of data between the base station ...



Three-Phase Systems and Their Applications

Unlike single-phase systems, which use a single alternating voltage, three-phase systems use three voltages or currents that are phase-shifted 120 degrees relative to one another.



Do communication base stations use two-phase electricity or three-phase

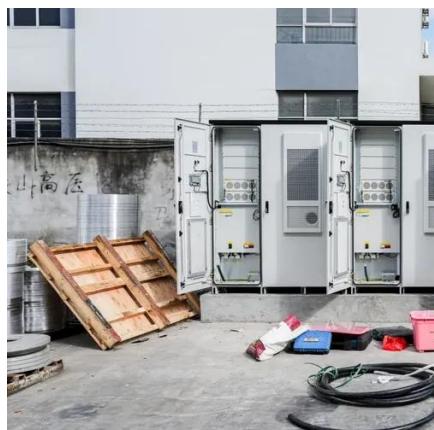
Figure 1 illustrates the basic configurations used to generate single-phase, two-phase, and three-phase AC voltages. The stator coil or coils provide the output voltage and current, and the rotor is actually a ...

Three Phase Power

Typically, they will produce 3 phase AC electricity. Meaning it outputs three separate sine waves, which all occur at slightly different times on 3 different wires.



What is Telecommunication Base Station .



[China Hop](#)

Generally speaking, a base station consists of three antennas, each transmitting signals in a 120 degree direction towards the surrounding area, which together provide seamless coverage of 360 degrees.

[What Is a Telecom Base Station and How Does It Work?](#)

In simple terms, the base station uses radio signals to cover a certain geographic area, allowing mobile devices within this area to connect to the communication network and the internet through the mobile ...



**200kWh
Battery Cluster**

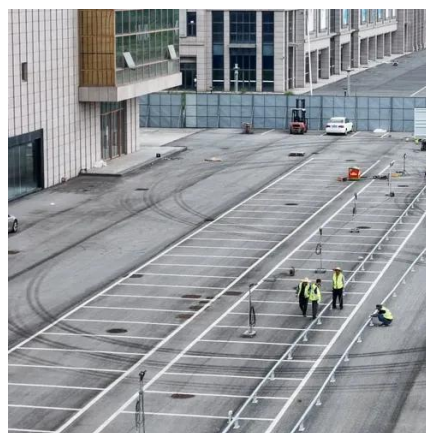


Complete Guide to 5G Base Station Construction , Key Steps, ...

Where does the electricity for communication base stations come from? It starts from large power plants and flows through substations, distribution stations, and along transmission lines, ...

What is a Base Station? -- From Communication Core to Thermal ...

Receiving and transmitting signals: The base station is both the transmitter and receiver of mobile phone signals. Network access: It converts wireless signals (electromagnetic waves) from ...



[Three Phase System : Connections.](#)



Working & Its Applications

A three-phase supply produces a consistent rotating magnetic field so, the construction of three-phase motors is simpler, small in size & can be automatically started with smooth operation.





Contact Us

For catalog requests, pricing, or partnerships, please visit:

<https://www.id2market.eu>

Phone: +34 910 56 87 45

Email: info@id2market.eu

Scan the QR code to access our WhatsApp.

