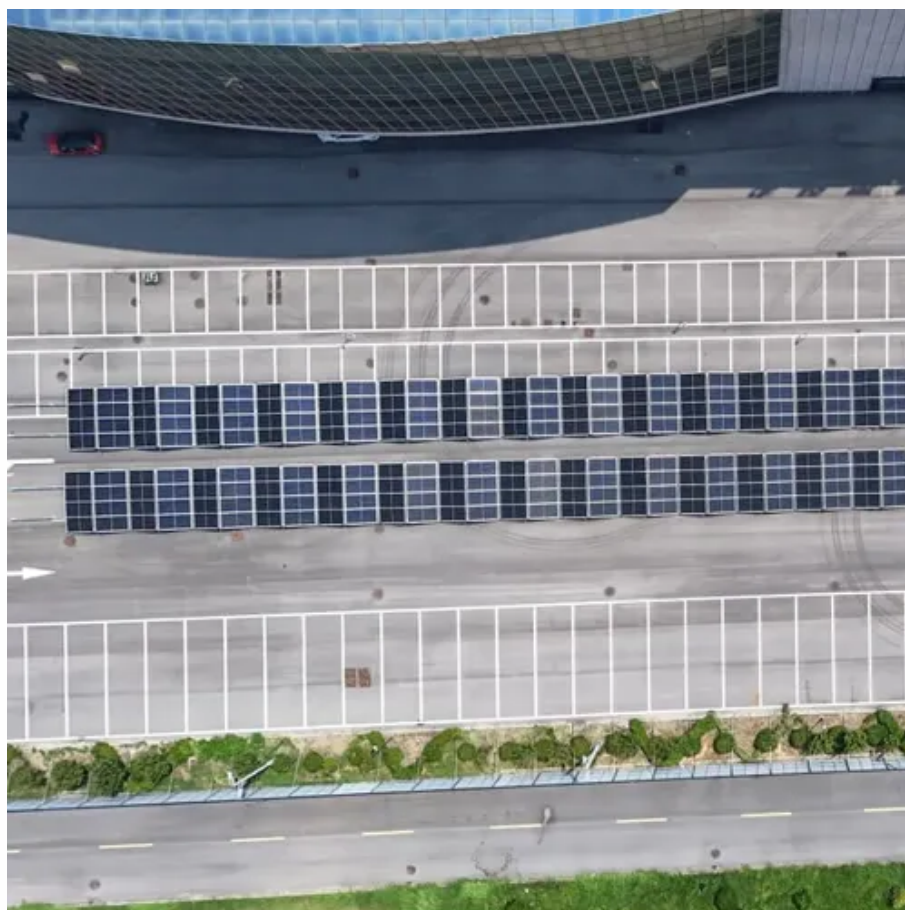




Yingli 300W photovoltaic panel parameters





Overview

Electrical parameters at Standard Test Conditions (STC) STC: 1000W/m² irradiance, 25°C cell temperature, AM1.5g spectrum according to EN 60904-3. Average relative efficiency reduction of 3. The specifications may deviate slightly and. This manual applies to photovoltaic modules ("PV modules", also commonly known as solar panels) manufactured by Yingli Energy Development Company Limited ("Yingli Solar"), and is explicitly written for qualified professionals ("Installer" or "Installers"), including without limitation licensed. Yingli their specifications, or this manual without prior notice. products of other manufacturers. Modules qualified for considered to meet the requirements for safety class II. In the course of the PV requirements has been verified by an. Off-grid Solar Power System OFFICIAL SPONSOR ABOUT YINGLI GREEN ENERGY Yingli Green Energy Holding Company Limited (NYSE: YGE) is one of the world's largest fully vertically integrated PV manufacturers. With over 4 GW of modules installed globally, we are a leading solar energy company built upon. Yingli Solar panels have efficiency ratings between 19. The panels are constructed with a heavy duty anodised aluminium provides high wind resistance and convenient mounting access. Cells are laminated between high low.



Yingli 300W photovoltaic panel parameters



[Yingli photovoltaic panel parameter table](#)

This manual contains important information pertaining to the before handling, installing, and/or maintaining Yingli Solar PV modules. Installation and User Manual.

IMPROVED POWER

Tested in accordance to the standard IEC 62804, our PV modules have demonstrated resistance against PID (Potential Induced Degradation), which translates to security for your investment.



[Specifications of Yingli photovoltaic panels](#)

This manual contains important information pertaining to the electrical and mechanical installation and maintenance of PV modules, and contains safety information that you must read carefully and be ...

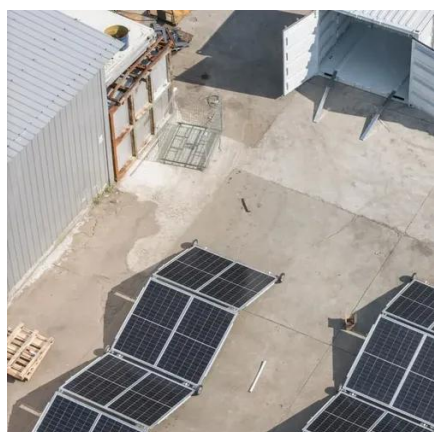
Installation and User Manual

Yingli Solar PV modules are designed to meet the requirements for the standards IEC 61215 and IEC 61730, application class A. Modules rated for use in this application class may be used in systems ...



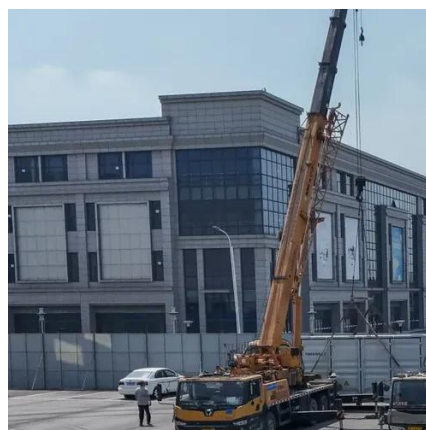
[Yingli Photovoltaic Polycrystalline Panel Specifications](#)

The . YL280P-29b/1500V solar panels have a rated output of 280 Wp and an impressive efficiency of 16.8 %, making them an excellent choice for homeowners looking to harness the



[Zhongnan Yingli Photovoltaic Panel Parameters](#)

A 50 Wp (Watt peak) polycrystalline photovoltaic solar cell module made by Yingli Co., Ltd., with the parameters shown in Table 2 below, is the type of photovoltaic solar cell module that



[Yingli Solar YL300P-35b Installation And User Manual](#)

This manual applies to photovoltaic modules ("PV modules", also commonly known as solar panels) manufactured by Yingli Green Energy Holding Co. Ltd. ("Yingli Solar"), and is explicitly written for ...

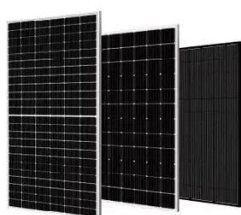
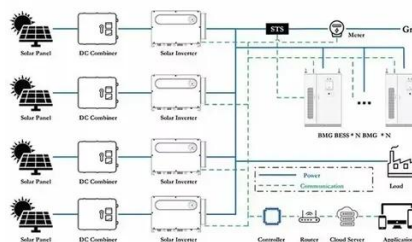


YLSYS 300 Series



We are committed to offer reliable and sustainable PV product and provide affordable green energy for all. We are the first renewable energy company and the first Chinese company to sponsor the FIFA

...



Polycrystalline Solar Panels

The panels are constructed with a heavy duty anodised aluminium provides high wind resistance and convenient mounting access. Cells are laminated between high low iron, 3mm tempered glass and a ...

[Características Yingli 300W , PDF , Solar Power](#)

Características Yingli 300W - Free download as PDF File (.pdf), Text File (.txt) or read online for free. panel solar 300 w specs





Contact Us

For catalog requests, pricing, or partnerships, please visit:

<https://www.id2market.eu>

Phone: +34 910 56 87 45

Email: info@id2market.eu

Scan the QR code to access our WhatsApp.

